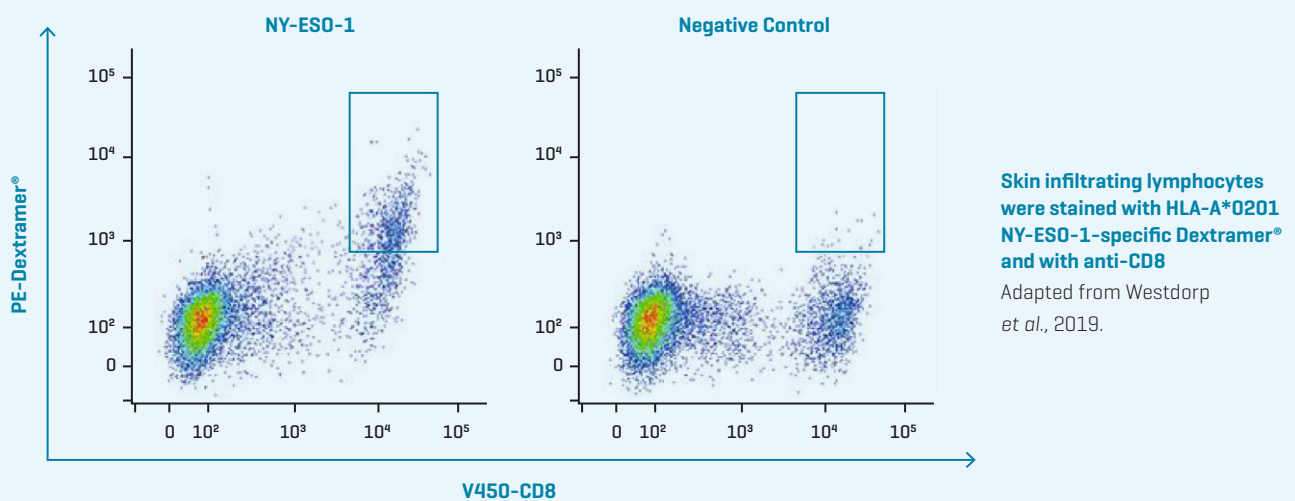


Identify Patients' Immunity Elicited by Cancer-Testis Antigens

Cancer-testis antigens (CTAs) are tumor-associated antigens (TAAs) with a restricted expression pattern limited to germline cells and tumor cells, making CTAs attractive targets for cancer research.

With MHC Dextramer[®] Cancer-Testis Antigens Panel, you can analyze tumor antigen-specific CD8⁺ T cells against most common CTAs: NY-ESO-1, MAGE-A1, and MAGE-A3.



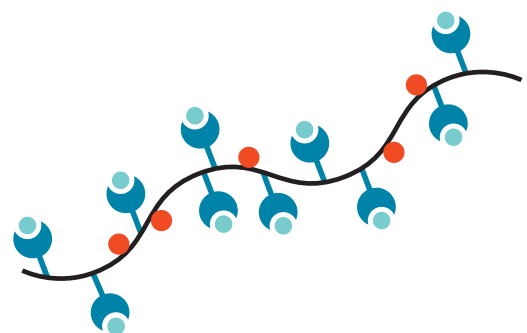
Characteristics of MHC Dextramer[®] Cancer-Testis Antigens Panel

The Panel provides all the benefits of the Dextramer[®] technology and consists of selected MHC I Dextramer[®] reagents for reliable cancer immune monitoring, from early discovery to clinical trials:

- High-sensitivity also for detecting low-affinity tumor-reactive CD8⁺ T cells
- Dual-color staining for each specificity provided by a PE- and APC conjugate to reduce the frequency of false positives

Benefits of MHC Dextramer[®] Cancer-Testis Antigens Panel

- Ready-to-use panel for selected cancer-testis antigens
- Time- and cost-saving approach
- Ensure consistent, reproducible, and comparable results
- Expand the limits of your research



● Peptide antigen ~ Dextran ● MHC ● PE

What Can You Do With MHC Dextramer[®] Cancer-Testis Antigens Panel

- Screen for CTAs in blood or tumor biopsies
- Profile tumor-reactive CD8+ T-cell responses and expansion upon epitope pulsing
- Evaluate vaccine efficacy
- Monitor long-term immunity
- Guide immunotherapeutic development

Product Description

The MHC Dextramer[®] Cancer-Testis Antigens Panel consists of 6 selected Dextramer[®] reagents against three common CTAs and two negative controls, as follows:

MHC ALLELE	PEPTIDE	FLUOROPHORE	ANTIGEN	TEST SIZE
HLA-A*0201	SLLMWITQV	PE	NY-ESO-1	25
HLA-A*0201	SLLMWITQV	APC	NY-ESO-1	25
HLA-A*0201	KVAELVHFL	PE	MAGE-A3	25
HLA-A*0201	KVAELVHFL	APC	MAGE-A3	25
HLA-A*0201	KVLEYVIKV	PE	MAGE-A1	25
HLA-A*0201	KVLEYVIKV	APC	MAGE-A1	25
HLA-A*0201	Neg. Control	PE	-	25
HLA-A*0201	Neg. Control	APC	-	25

Each Dextramer[®] reagent in the panel is also available as a single reagent. Check our website for additional MHC I Dextramer[®] specificities fitting your cancer research.

© Immudex ApS. Denmark, 2021

For research use only. Not for use in diagnostic or therapeutic procedures.