

## MHC Monomers to Push the Boundaries of Your Research

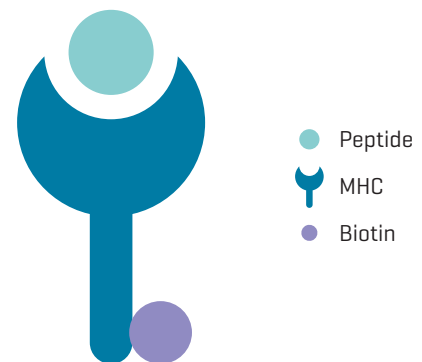
T cells respond to peptides presented by MHC molecules. Each T cell recognizes a unique peptide-MHC combination, where CD8+ and CD4+ T cell subsets are restricted to MHC class I and class II, respectively.

Immudex provides a comprehensive portfolio of high quality, ready-to-use or peptide-receptive MHC I and II Monomers, suitable for a range of applications.

## Flexible Building Blocks to Advance Your Research

Discover our portfolio of biotinylated MHC Monomers designed to go beyond standard research questions and give you the flexibility to advance your research in a range of areas, including:

- ▮ Assembly of MHC Multimers using U-Load Dextramer<sup>®</sup>
- ▮ T-cell stimulation or enrichment in cell therapy research
- ▮ Assessment of peptide-MHC binding
- ▮ Identification of TCR-like antibodies
- ▮ Epitope and neoepitope screening
- ▮ Screening for pMHC specificities
- ▮ TCR discovery and validation
- ▮ T-cell engagers



## The Immudex MHC Monomer Portfolio

The Immudex Monomer portfolio covers a broad spectrum of monomer formats, alleles, labeling and biotinylation options. Immudex's experts have extensive experience with MHC Monomers and are happy to help you with guidance and technical support.

### Ready-to-Use MHC Monomers

High-quality peptide-MHC complexes, ready for assembly into multimers, or for other applications.

- ▮ MHC I and II Monomers
- ▮ GMP
- ▮ Different volumes available [20 µg, 100 µg, 200 µg, 1 mg and 2 mg]

### Peptide-receptive MHC Monomers

MHC I and MHC II peptide-receptive Monomers, engineered to receive your peptide of choice.

- ▮ easYmers<sup>®</sup> - MHC I peptide-receptive Monomers
- ▮ U-Load MHC II - MHC II peptide-receptive Monomers

### Custom Monomers

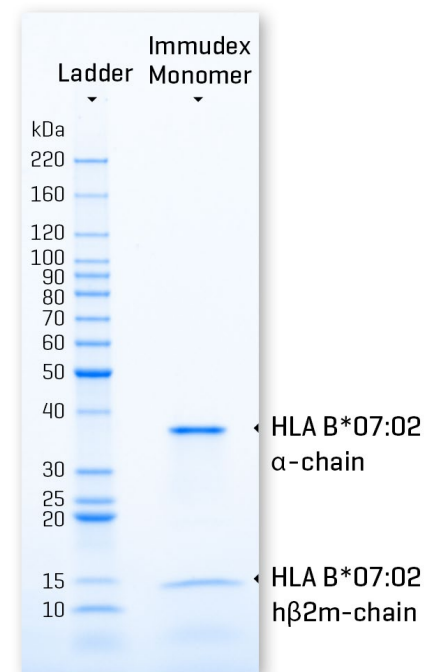
Custom Solutions and Services produces MHC Monomers and protocols tailored to your needs.

- ▮ Custom, high-quality MHC I or II Monomers independent of complexity
- ▮ Dextramerization service
- ▮ Protocol design
- ▮ Custom test sizes

## You Choose the Allele and Peptide. We Ensure Quality from Start to Finish.

Whether ready-to-use or loadable, Immudex's MHC Monomers perfectly unify versatile use and stringent quality control, making them the most suitable choice for your research. Highly stable at -80°C, they can be used whenever needed in your research.

The image to the right shows 1µg of MHC Monomer [HLA B\*07:02 / RIPHERNGFTVL, cat. no. M-WH02135] run on an SDS-PAGE Gel under reducing conditions. The high purity of the MHC Monomer is evidenced by absence of degradation products.

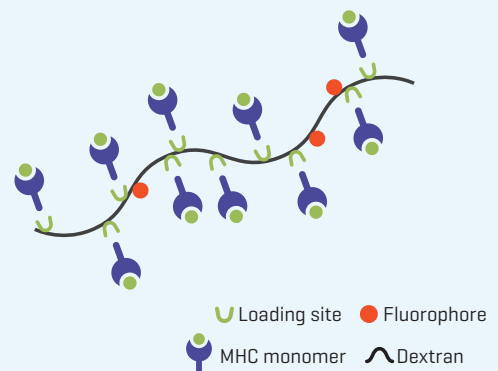


## Broad Allotype Coverage to Explore Human Immune Diversity

Covering a broad spectrum of HLA-A, HLA-B, and HLA-C allotypes found in populations around the world, Immudex's portfolio of MHC Monomers enables you to create specific peptide-allele combinations suitable for different patient cohorts. Our broad range of MHC alleles for human, mouse and primates is constantly expanding. Find the complete list of alleles here: <https://www.immudex.com/resources/mhc-alleles-list/>

## U-Load Dextramer<sup>®</sup> and U-Load dCODE Dextramer<sup>®</sup>

Biotinylated, easYmers<sup>®</sup> and U-Load MHC II Monomers are peptide-receptive monomers that allow you to build your own Dextramer<sup>®</sup> or dCODE Dextramer<sup>®</sup> reagents or lab-developed MHC Multimers with your peptide of choice.



Interested in learning more? Please contact us at [customer@immudex.com](mailto:customer@immudex.com).

© Immudex ApS. Denmark, 2022

For research use only. Not for use in diagnostic or therapeutic procedures.